

Figure 5: ESKOM: Dealesville - Kimberley - Kathu
 BOUNDARY to ULCO
 Expected Engineering Geological Zone Map:
 Scanned 1:250 000 KIMBERLEY 2824

ENGINEERING GEOLOGICAL SURVEY:

As shown on plan and described in report

Engineering Geological Investigation to determine the potential for the upgrading of Power lines from Dealesville to Kuruman,
 with Boundary to Ulco corridors.

REPORT NUMBER: GS201403KBU DATED: March 2014

Report by:

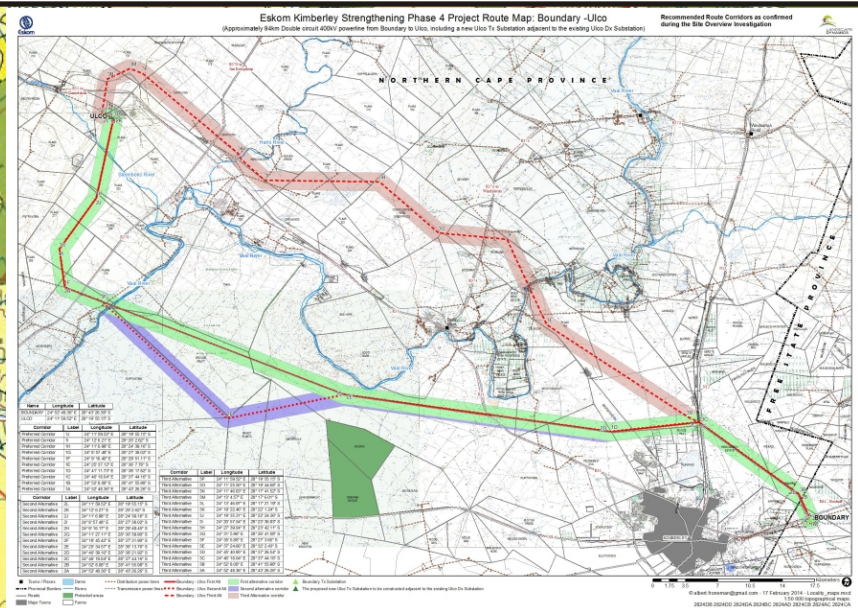
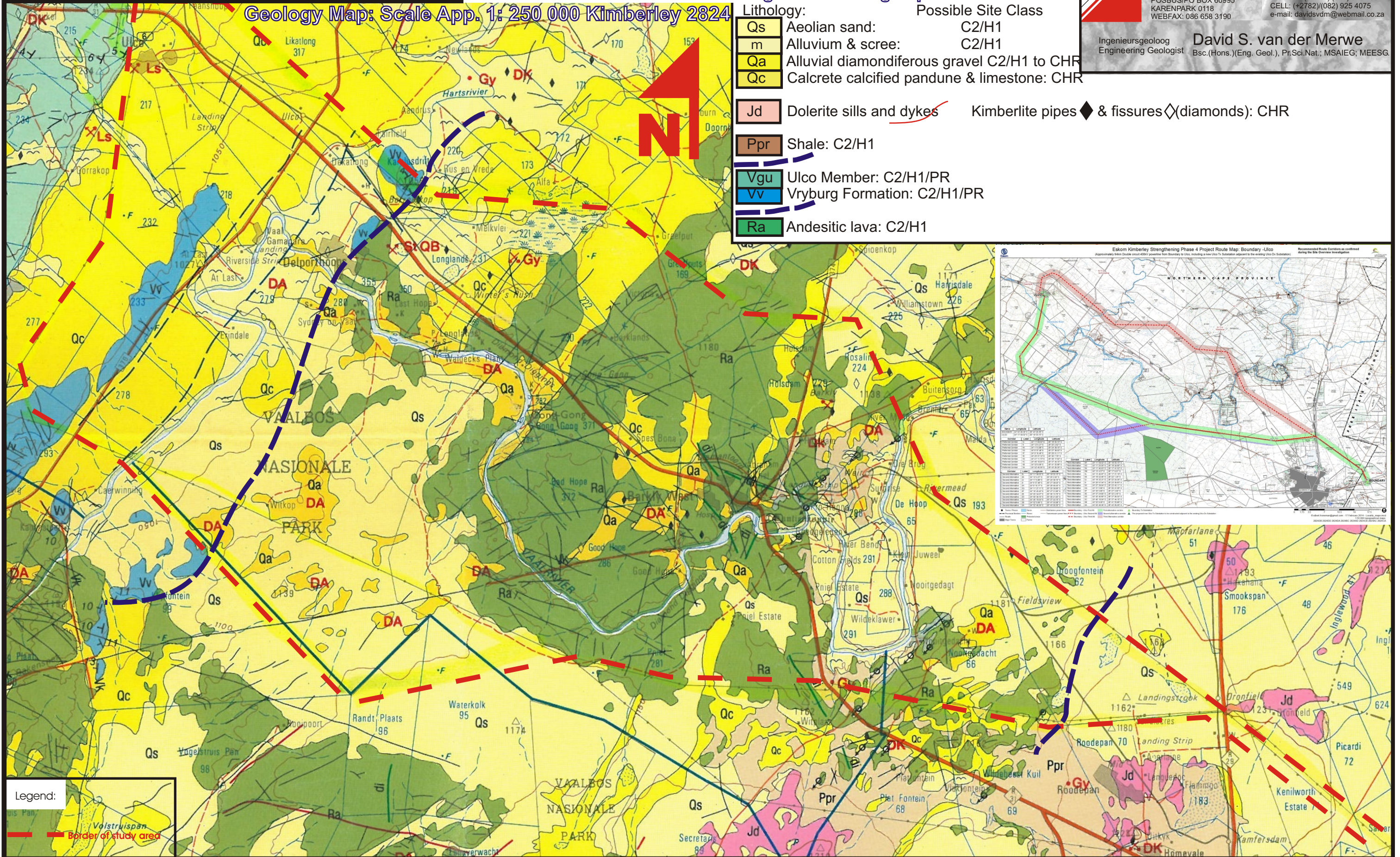
GEOSET cc

CK 99/65610/23
 RAADGEWENDE INGENIEURS- EN OMGEWINGSGEOLOE
 CONSULTING ENGINEERING AND ENVIRONMENTAL GEOLOGISTS
 POSBUS/PO BOX 60995 KARENPAK 0118
 WEBFAX: 086 658 3190
 TEL/FAX: (+2712)/(012) 525 1004
 CELL: (+2782)/(082) 925 4075
 e-mail: davidsvdm@webmail.co.za

Ingenieursgeoloog Engineering Geologist **David S. van der Merwe**
 Bsc.(Hons.)(Eng. Geol.), Pr.Sci.Nat.; MSAIEG; MEESG

Legend Indicating Expected Site Classes

Lithology:	Possible Site Class
Qs Aeolian sand:	C2/H1
m Alluvium & scree:	C2/H1
Qa Alluvial diamondiferous gravel	C2/H1 to CHR
Qc Calcrete calcified pandune & limestone:	CHR
Jd Dolerite sills and dykes	Kimberlite pipes ◆ & fissures ◇(diamonds): CHR
Ppr Shale:	C2/H1
Vgu Ulco Member:	C2/H1/PR
Vv Vryburg Formation:	C2/H1/PR
Ra Andesitic lava:	C2/H1



Legend:
 - - - - - Border of study area